



REVISIONS

ZONE	REV	DESCRIPTION	DATE	APPROVED
------	-----	-------------	------	----------

Attitude Stability System Outside Bearing Support

Warning: Use .2" or thinner parallels in vice.

CNC saved program #45

Ev 1: Top side cut-off

Ev 2: Bearing hole center

Ev 3: Other big hole center

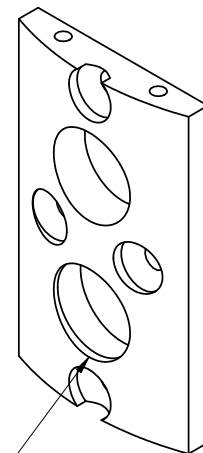
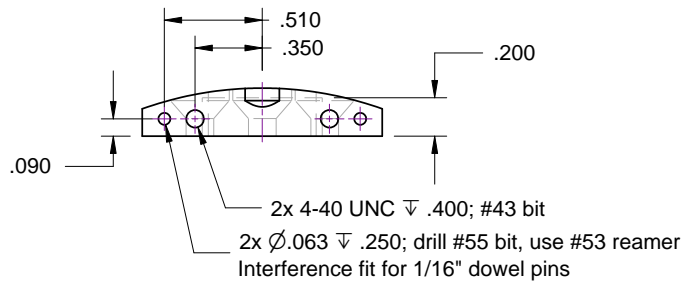
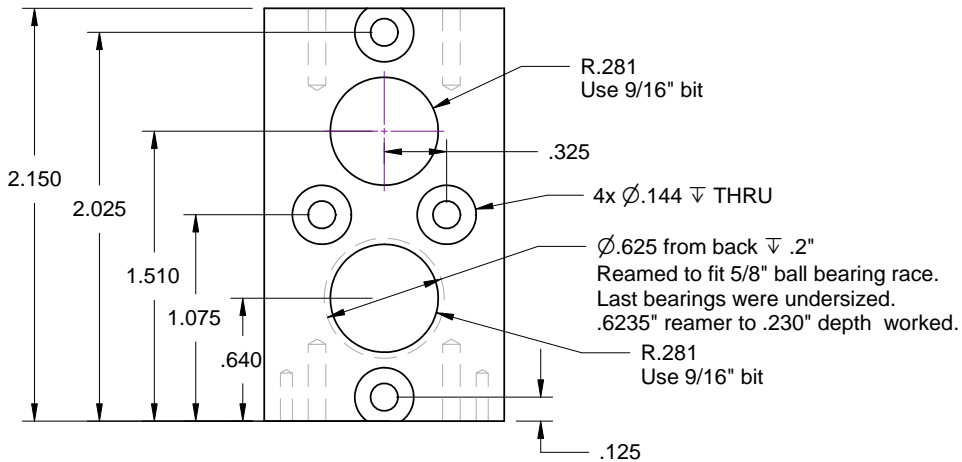
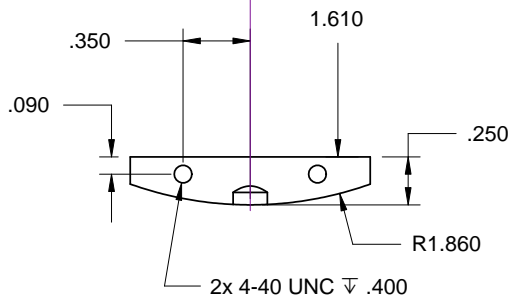
Ev 4-7: #6-32 fixture mounting screw holes

Countersink .11", remove side crews
during deep cuts.

Ev 8-9: #4-40 edge holes

Ev 10-11: 1/16" interference dowel pin holes

Drill #55, ream #53.



Canard ball bearing seats
against this lip.

SIZE	FSCM NO.	DWG NO.	REV
A			
SCALE	B. Feretich		SHEET

